

PianOrquestra – 10 Hands and 1 Piano

Tech Sheet - 2018

Rooming List

03 DBL:

Verônica Fernandes, Masako Tanaka
Priscilla Azevedo, Marina Spoladore
Carlos Fausto Brito, Rafael Duarte

02 SGL:

Claudio Dauelsberg
Maria Eugenia Linhares

Catering & Meals

Backstage/dressing room:

2 separated backstage rooms with good light and mirrors, a washbasin, 6 clean towels and a toilet, is needed.

- coffee, milk and sugar
- 16 bottles of mineral water, juices and coca-cola
- Sandwiches

Meals:

Breakfast + 2 hot meals during travel days

Sound Rider

F.O.H

- PA system sufficient to the venue, capable of producing an overall equally sounding, undistorted sound(110 dB). The system must be ready to operate without buzz and bugs, 1 hour before sound check.
- The FOH boot shall never be placed against a wall or under a balcony and always in a central focal point in front of the stage, never higher than 30cm above floor level.
- The PA system shall not be used by any in house /venue, Disk Jockey or MC without the express permission of the PA system touring personnel and the Artist's Production Manager.
- The Artist's PA system may be used at anytime with consent of the Artist's Production Manager for the use of Health and Safety announcements
- All microphones will be positioned on the piano only by our sound technician

The outboard shall contain at least:

- 4 channels of gating (drawmer DS201,BSS405)
- 12 channels of compression (DBX160,klark teknik,BSS404)
- 31 bands graphic stereo EQ inserted over the L&R output (Klark teknik,BSS),
- 2 Multi EFX (SPX900.),1 Reverb unit (PCM70,80.)
- 1 intercom between FOH & STAGE. position.

GENERAL INFORMATION:

In case of problems meeting this specification, please do not hesitate to contact the artist through your contact.

We ask local promoters or sound engineers not to make changes in this spec, on behalf of the artist, without confirming with artist or representative. Brands and types of sound equipment is meant as quality guidance, and not as absolute requirements if not stated specifically.

The Stage Box / Audio Multi Cable and AC Power must be under the Grand Piano.

EQUIPMENT QUALITY:

Sound equipment must be of high standard and free from audible noise. Mixing desk must be in a good position in the audience area, centred between left and right PA to ensure good control

possibilities. Sound system must be rigged and tested for functionality before artist arrives for setup and sound check. Local system engineer must be available for the artists own engineer at all times from sound check to end of concert.

SOUND SYSTEM:

High quality 3 or 4 way active PA-system. The system must cover all audience areas with uniform and undistorted sound. It is important that the system is free of hum and noise

Qty.	F.O.H / MONITOR
01	DIGITAL MIXING CONSOLE PM5D / QL 5 / CL 3 (F.O.H)
04	ACTIVE MONITORS CLAIR B., MEYER SOUND, EAW (ONLY WITH GUEST)
01	ACTIVE P.A. JBL, MEYER SOUND, EAW
01	INTERCON BETWEEN F.O.H X STAGE

CH	INSTRUMENT / DETAIL	MIC	OBS.
01	PIANO – OVER HIGH	RODE NT-5	BOOM STAND
02	PIANO – OVER LOW	RODE NT-5	BOOM STAND
03	PIANO – TREBLE	DPA 4099 P	
04	PIANO – MEDIUM	DPA 4099 P	
05	PIANO – BASS	DPA 4099 P	
06	PIANO – UNDER TREBLE	Shure Beta 56	
07	PIANO – UNDER BASS	Shure Beta 52	
08	PIANO – BASS DETAIL	Sennheiser E901	
09	VOX CLAUDIO	UR2 / SM 58	WIRELESS / BOOM STAND
10	VOX GUEST	UR2 / SM 58	WIRELESS / BOOM STAND

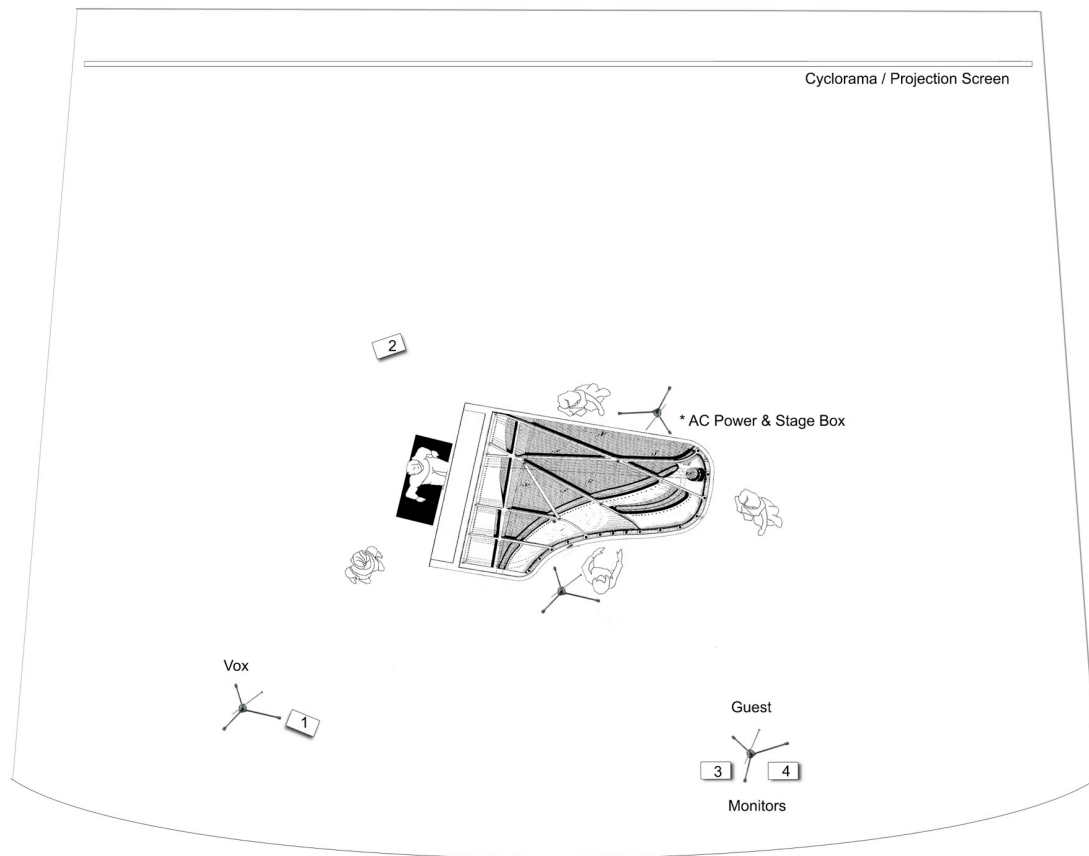
WAY	MONITORS (ONLY WITH GUEST)
01	PIANO L
02	PIANO R
03	VOX L
04	VOX R

Qty.	BACKLINE
01	PIANO A STEINWAY, YAMAHA OR SIMILAR - AT LEAST ¼ OF THE TAIL WITH LARGE BENCH - EXCEPT BÖSENDORFER MODEL OVER 88 NOTES!

MICROPHONES & STANDS:

- 2 Shure SM 58 UR2 wireless - Can be replaced by similar (Tripod Microphone Stand w/ Telescoping Boom)
- 2 Rode NT-5 / Neumann KM 184 / Beyerdynamic M 201 TG or TG 153 - can be replaced by similar (Tripod Microphone Stand w/ Telescoping Boom)
- 3 DPA 4099 P (Piano Clip) / Beyerdynamic TG 152 / Shure Beta 98AD/C - can be replaced by similar
- 1 Shure Beta 56 / Beyerdynamic TG D57 - can be replaced by similar
- 1 Shure Beta 52 or Beyerdynamic TG D50d
- 1 Sennheiser E-901 / Beyerdynamic TG D71 / Shure Beta 91A / Crown PZM-30 D
- 2 LP Percussion EZ-Mount Mic Claw claws (LP592A or LP591A). **INDISPENSABLE!**

STAGE PLAN:



Projection Rider

THE GROUP TRAVELS WITH:

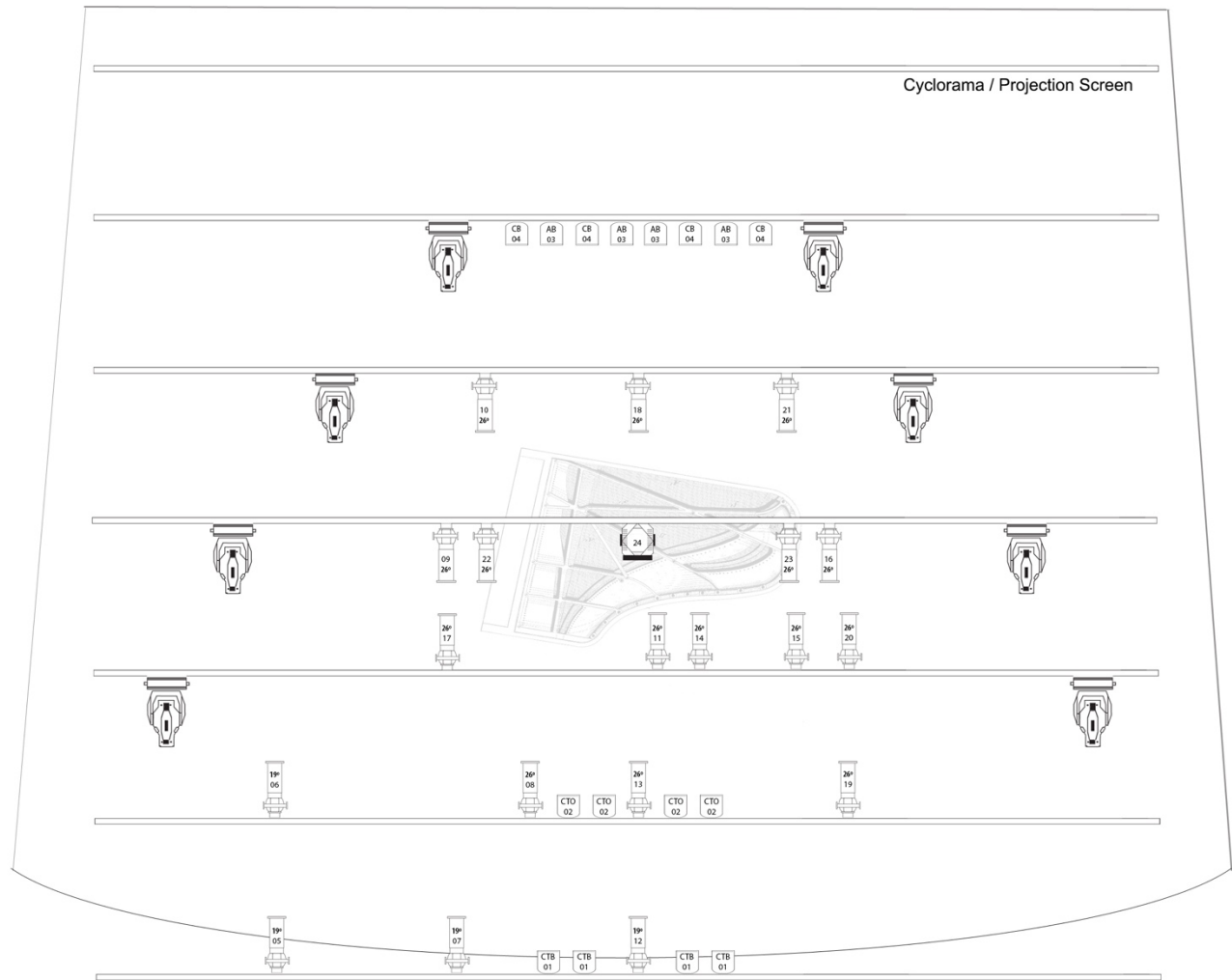
- 1 Video Mixer Roland V1-HD
- 1 MacBook Pro – *for projecting the visual content*
- 2 Action Cameras GoPro + Accessories + memory card (*for projection the action inside the piano and keyboard*)
- 2 HDMI cables (3 mts) – *to connect the converters to the video mixer and the camera*
- 2 Converter miniUSB/HDMI – *to connect the HDMI cable to the camera*
- 1 Converter displayport/HDMI – *to connect the video signal from the MacBook to the video mixer*
- 1 HDMI cable (1 mts) – *to connect the video mixer to the converter*
- 2 Pairs of HDMI/CAT6 120m converters (sender & receiver) – *to connect the cameras to the video mixer*
- 1 HDMI/VGA adapter
- 1 Sony 18' HDMI Monitor
- Some AC power cables

VENUE NEEDS TO PROVIDE:

- Projector – 4500 ANSI or higher– depending on the room size - *with HDMI cable to connect the projector to House Mix*
- Projection Screen or Cyclorama
- 2 CAT6 Ethernet cables with RJ45 connector on both sides – *to connect the converters to the video mixer at House Mix*
- AC Power for devices (video mixer, MacBook, monitor, cameras, etc.)
- Local technician – to support during setup and concert

ATTENTION: Promoter must provide all the long cables (HDMI and CAT6 Ethernet) – 2 CAT 6 Ethernet cables with enough length to cover the distance between the House Mix (where the VJ will be settled with video mixer and monitoring) and the converters at stage on the side of the piano + 2 HDMI cables (1 spare) with enough length to cover the distance between the video mixer and the projector.

Lighting Rider



EQUIPMENT:

- 08 Moving Lights Wash Beam
- 04 ELIPSO ETC Source Four 19°
- 15 ELIPSO ETC Source Four 26° w/ IRIS
- 04 ELIPSO ETC Source Four 36° (FLOOR)
- 16 ETC Source Four PAR CE w/ LENS MFL
- 01 PLANO CONVEX SPOTLIGHT
- 01 Haze Machine DMX
- 01 Avolites Pearl 2010 or similar

GELS:

ROSCOSUN 1/2 CTO - R3408
HALF BLUE CTB - R3204
GOLDEN AMBER - R21
CONGO BLUE - R382

Contact:

Marie Linhares (tour manager) +55 (21) 3235-8518 / 97392-7674 – marie@dellarte.com.br
Carlos Fausto Brito (stage manager) +55 (71) 98612-0195 – carlosfaustosb@gmail.com
Rafael Duarte (sound engineer) +55 (21) 97914-3344 – rafathor25@yahoo.com.br
Claudio Dauelsberg (musical director) +55 (21) 99911-2611 – c.dauelsberg@gmail.com