



**BAITANASYSTEM**  
**RIDER**  
**ENGLISH**

## **F.O.H.**

01 Console 48 channels (Yamaha PM5DRH/Innovasom SY80/Midas Heritage/Digidesign)	
04 Equalizers of 31 bands (Klark Teknik, TC.BSS)	To Analog Set Up
04 Compressor (DBX, Drawmer, Klark Teknik)	To Analog Set Up
04 Gates (Drawmer, Klark Teknik, BSS)	To Analog Set Up
03 Processor Efx (Lexicon, T.C. Eletronics or Yamaha)	To Analog Set Up

## **MONITOR**

01 Console 40 channels (Yamaha M7CL, PM5DRH/Innovason SY80/Midas Heritage/Digidesign)	
06 Equalizers of 31 bands (Klark Teknik, TC, BSS)	To Analog Set Up
12 Wedges (Clair Brothers, Meyer Sound, EAW)	
01 Subwoofer 2 x 18"	
Side Fill 3 way (Line Array + Sub)	

## **BACKLINE**

- 01 Power transformer 5 KVA 220V. To 110V. With 6 american outlets
- 01 Guitar Amplifier Fender The Ville or The Twin
- 01 Bass System Ampeg or GK 800 (Head and 1 x 15" + 4 x 10" speakers)
- 04 Risers "Rosco" 2m x 1m

## **OBS.**

The power of sound as well as the amount of speakers and amplifiers must be compatible with the location of the show and the preview audience, being capable of generating a SPL compatible with this audience, and the height of HOUSE MIX should not exceed 40cm of soil. These criteria are the sole responsibility of the contracted sound company.

For questions or exchange needs some equipment, please contact the Manager.



Please send us specifications of sound in advance

Produtor – Alex Pinto : (+55 71) 9968-7742 | 8876-1433 | alexpinto3@gmail.com

Sound Engineer and Stage Manager – Curujito (+55 71) 9116-8243 | humberto.curujito@hotmail.com

# INPUT LIST

CANAL		PEDESTAL	
	INSTRUMENTO	INSERT PA	
		MIC. / DI	
01	DJ L	DI	
02	DJ R	DI	
03	BAIXO	DI	COMP.
04	GUITARRA BAIANA	DI	
05	GUITARRA BAIANA	SM57	SMALL
06	VOZ GUITARRA	M58	COMP. TALL
07	VOZ PERCUSSÃO	SM58	COMP. TALL
08	VOZ RUSSO	SM58 WIRELESS	COMP. TALL
09	EFEITO VOZ L	DI	
10	EFEITO VOZ R	DI	
11	SURDO 1	SM 58	CLAMP / LP
12	SURDO 2	SM 58	CLAMP / LP
13	SURDO 3		CLAMP / LP
14	TIMBAU	SM57	MEDIUM
15	CAIXA	SM57	MEDIUM
16	REPIQUE	SM57	MEDIUM
17	SAMPLER	DI	COMP. MEDIUM
18	SAMPLER	DI	COMP.
19	FX 1L	SM 81 GRANDE	
20	FX 1R	SM 81 GRANDE	
21	FX 2L	SM 81	
22	FX2R	SM 81	
23	VOZ STAND BY	SM58 WIRELESS	COMP TALL
24	VOZ CONVIDADO 2	SM58 WIRELESS	COMP TALL

# MIXS MONITOR

## VIA

01  
02  
03  
04  
05  
06  
07  
08  
09  
10  
11  
12

## INSTRUMENTO

VOZ  
GUITARRA BAIANA  
BAIXO  
PERCUSSÃO  
SOUND SYSTEM  
SOUND SYSTEM  
SIDE FILL L  
SIDE FILL R

## MUSICO

RUSSO  
ROBERTINHO  
MARCELO SÊCO  
BATATA  
CHICO CORRÊA  
SUBWOOFER

## MONITOR

2 X 12" + Drive  
2 X 12" + Drive  
1 X 12" + Drive  
2 X 12" + Drive  
2 X 12" + Drive  
2 X 18"  
3 or 2 WAY + Sub  
3 or 2 WAY + Sub

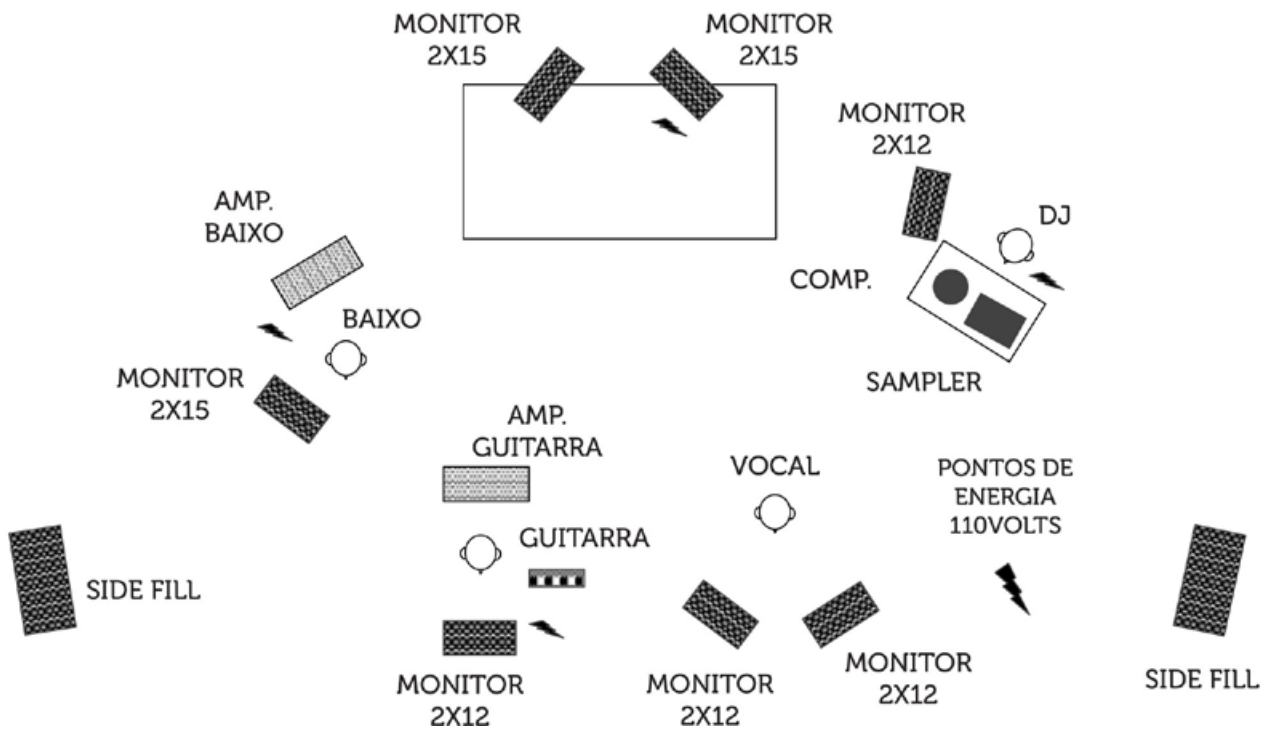


Please send us specifications of sound in advance

Produtor – Alex Pinto : (+55 71) 9968-7742 | 8876-1433 | alexpinto3@gmail.com

Sound Engineer and Stage Manager – Curujito (+55 71) 9116-8243 | humberto.curujito@hotmail.com

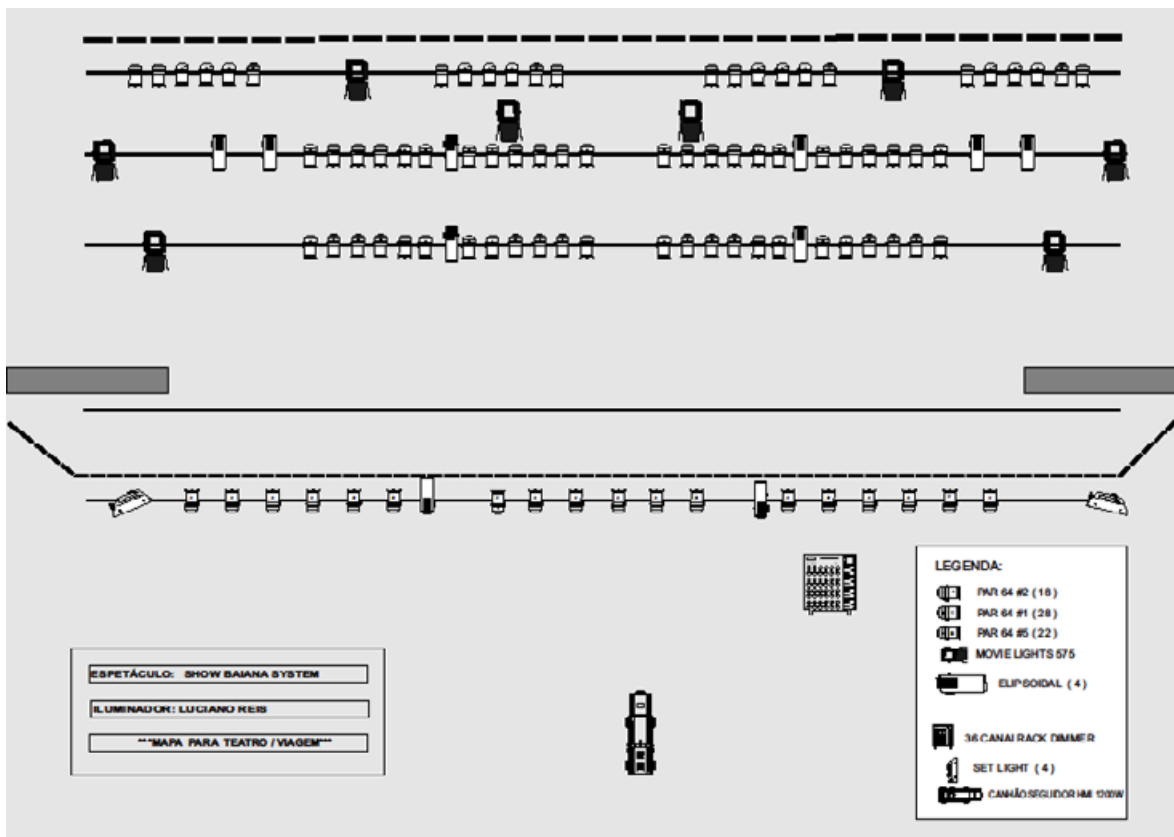
# STAGE PLOT



# VÍDEO

01 Projection of 5000 lúmens or LED.  
Input DVI or VGA or one DVD

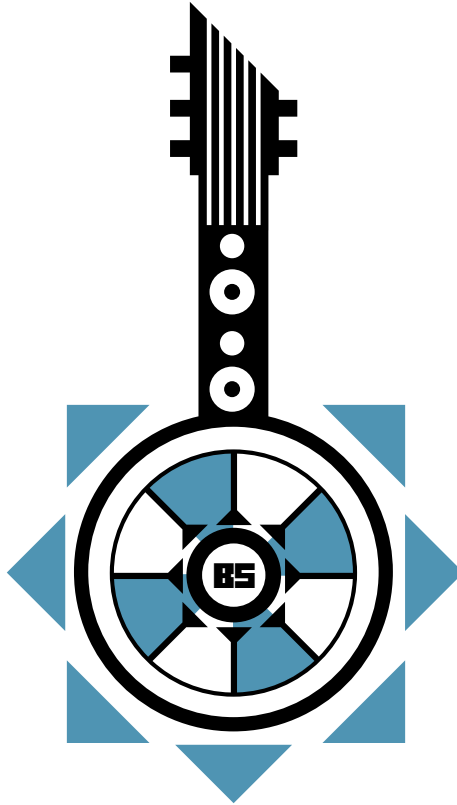
# LEIGHT PLOT



## QUANTIDADE

18	Pair 64 #2
28	Pair 64 #1
22	Pair 64 #5
06	Movies lights 575
04	Ellipsoidal 1
04	Ser light
01	Follower Spot 1200 W with operator
01	Lighting Board of 36 channels rack dimmer

**REVER**  
**BAIANASYSTEM**



**BAIANASYSTEM**

[www.baianasytem.com](http://www.baianasytem.com)  
[www.myspace.com/baianasytem](http://www.myspace.com/baianasytem)  
[www.youtube.com/baianasytem](http://www.youtube.com/baianasytem)  
[www.flickr.com/baianasytem](http://www.flickr.com/baianasytem)  
[www.facebook.com/baianasytem](http://www.facebook.com/baianasytem)  
[www.reverbnation.com/baianasytem](http://www.reverbnation.com/baianasytem)